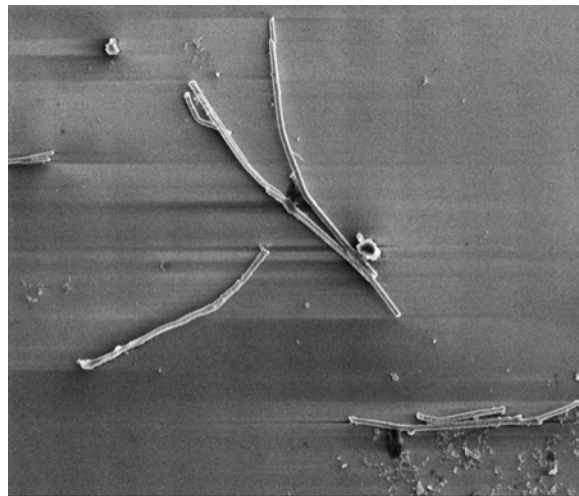


E-Beam	Mag	FWD	Tilt	Spot	08/11/05	HFW	5 μm
5.00 kV	6.50 kX	4.840	0.0°	3	18:41:48	46.8 μm	



E-Beam	Mag	FWD	Tilt	Spot	08/12/05	HFW	5 μm
5.00 kV	8.00 kX	4.502	0.0°	2	18:55:49	38.0 μm	